


## Human IGF-I Protein, His tag (Animal-Free)

Cat #: PRP1933

Size: 100 µg/500 µg/1 mg/10 mg

### Product Information

	<b>Product Name:</b> Human IGF-I Protein Protein, His tag (Animal-Free)		
<b>REF</b>	<b>Catalog Number:</b> PRP1933	<b>LOT</b>	<b>Lot Number:</b> Refer to product label
	<b>Purity:</b> > 95 % as determined by SDS-PAGE		
	<b>Storage:</b> Store at -20°C		<b>Preparation method:</b> E.coli
	<b>Shipping:</b> The product is shipped at ambient temperature.		

**Background:** Insulin like Growth Factors 1 (IGF-I) is a member of the Insulin-like Growth Factors. IGF-I is mainly expressed from liver, adipose tissue, endometrial stromal cells, Leydig cells, and can be isolated from plasma. IGF-I mediating the protein anabolic and promoting effect of pituitary growth hormone. IGF-I also affects metabolism of glycogen, DNA synthesis and glucose uptake via binding to IGF-I receptor.

**Sequence:** Amino acid sequence derived from Human IGF-I Protein (Gly49-Ala118) (P05019) was expressed with 6×His tag at the C-terminus.

**Protein length:** The recombinant Human IGF-I Protein consists of 70 amino acids and predicts a molecular mass of 8.59 kDa.

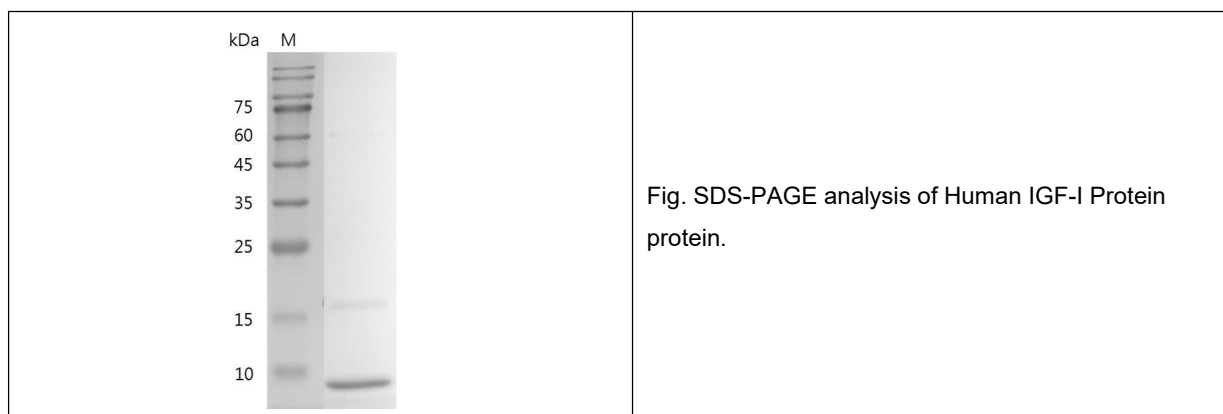
**Biological Activity:** Measured by its ability to induce MCF-7 cells proliferation. The ED<sub>50</sub> for this effect is 0.9-3.1 ng/mL.

**Endotoxin:** <0.1 EU per 1 µg of the protein by the LAL method.

**Formulation:** Lyophilized from PBS, pH 7.4.

**Storage Instructions:** Lyophilized protein product should be stored desiccated below -18°C. Upon reconstitution, the protein should be stored at 4°C between 2-7 days and for future use below -18°C. For long term storage it is recommended to add a carrier protein (5% HSA, 10%FBS or 0.1%BSA). Please prevent freeze-thaw cycles.

**Usage notes:** Always centrifuge tubes before opening. It is recommended to reconstitute the lyophilized recombinant protein to a concentration of 0.1-1 mg/mL using the buffer we provided, and keep at room temperature for at least 20 min to fully dissolve. Please avoid vortex vigorously.



**Note:** The product listed herein is for research use only and is not intended for use in human or clinical diagnosis. Suggested applications of our products are not recommendations to use our products in violation of any patent or as a license. We cannot be responsible for patent infringements or other violations that may occur with the use of this product.